



SAVOY PALACE

Tribute Cosmopolitan Resort

SAVOY *signature*



A MEMBER OF
THE LEADING HOTELS
OF THE WORLD



Tribute Cosmopolitan Resort

Location

City centre of Funchal, Madeira Island, at walking distance from local attractions and 20 minutes away from International Airport

Category: 5 Stars

Affiliation: The Leading Hotels of the World

Association: International Congress and Convention Association (ICCA)

Opening Year: Summer 2019

Number of Floors: 17

Reception: 2nd Floor

Accommodation

- 2 Presidential Suites
- 14 Pool Suites
- 34 Suites
- 246 Ocean, Superior & Concept Rooms
- 56 Avenue & Garden Rooms

Room Facilities

- Balcony
- 24-hour Room Service
- Daily housekeeping and Turndown service
- Nespresso coffee machine
- Complimentary welcome mineral water, tea & coffee
- Mini-bar
- Tea and coffee facilities
- Pillow menu
- Lighted make-up mirror
- Amenities
- Hairdryer
- Bath robe and slippers
- Air Conditioning with individual control
- Free high speed WiFi
- IP & Led TV
- Video on Demand
- Telephone
- Safe box
- 4 rooms for reduced mobility guests

Restaurants & Bars

- Galáxia | Skyfood . Skybar. Skypool
- Jacarandá | Lounge & Club
- Hibiscus | Restaurant

- Orchidaceae Atelier | Restaurant
- Alameda | Restaurant . Lounge . Gelateria
- Lobby Lounge | Bar & Cigars
- Vimes | Entertainment Bar
- The Deli Gourmet

Conference & Events Centre

- Business Centre
- 928 sq. m | 9 989 sq. ft multifunctional Ballroom with capacity to up to 1 400 people (divisible in 3)
- Direct access to the exterior
- Dedicated conference reception, with bar and refreshment facilities
- 5 Meeting Rooms from 42 to 66 sq. m | 452 to 710 sq. ft
- 1 Hospitality suite with 266 sq. m | 2 863 sq. ft
- 1 Boardroom with 100 sq. m | 1 076 sq. ft - Jacarandá

Swimming Pools

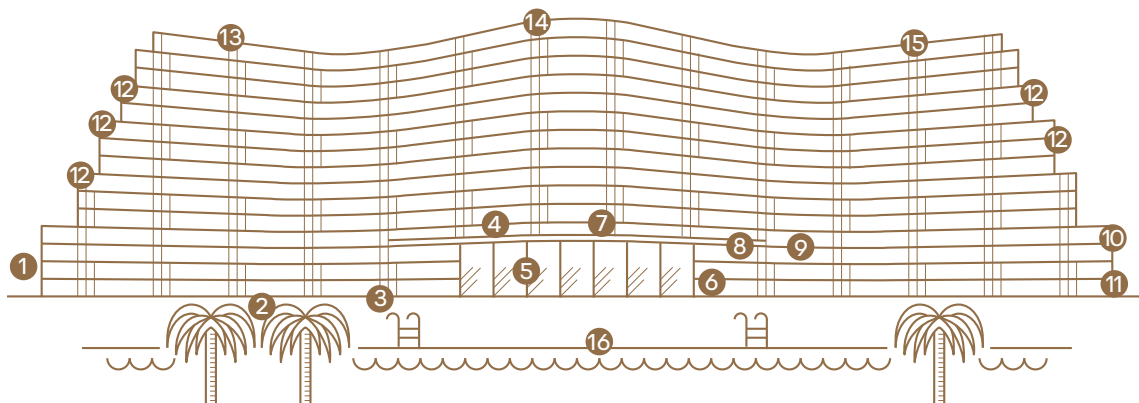
- 1 adults-only infinity pool at the rooftop of Galáxia
- 1 infinity pool and 1 jet pool at the rooftop of Jacarandá Lounge & Club
- 1 exterior swimming pool
- 1 heated indoor pool
- 1 exterior children's pool
- 1 heated indoor pool at Laurea spa

Spa

- 11 treatment rooms
- Champagne & Nails Bar
- Halotherapy room
- Sensorial showers
- Beauty salon
- Jacuzzi
- Sauna
- Steam room
- Ice fountain
- Heated indoor pool
- Relaxation room

Facilities and Other

- Free wifi in all public areas
- 24-hour multilingual concierge
- Indoor private parking
- Shopping gallery with stores, restaurants and bars
- Children's playroom
- Library
- Fitness Centre
- Games room
- Shuttle bus
- Laundry and dry-cleaning service
- Concierge and Guest Experience service
- Babysitting (on request)
- Selection of newspapers
- Live music



1. Shopping area & The Deli Gourmet
2. Laurea Spa
3. Vimes | Entertainment Bar
4. Lobby Lounge | Bar & Cigars

5. Orchidaceae Atelier | Restaurant
6. Hibiscus | Restaurant
7. Reception
8. Bellevue Hospitality Suites

9. Library
10. Shopping area
11. Conference & Events Centre
12. Pool Suites

13. Jacarandá | Lounge & Club
14. Presidential Suites
15. Galáxia | Skyfood . Skybar . Skypool
16. Alameda | Restaurant . Lounge . Gelateria



Meeting Rooms

Floor	Meeting Rooms sq. ft	Area sq. m	Dimensions (m)	Height	Theatre	Classroom	U Shape	Boardroom	Cabaret	Cocktail	Buffet	Menu
0	GRAND BALLROOM	928	22 x 41.8	6	1400	540	280	300	360	1200	500	600
	BALLROOM SALON A	308	22 x 14	6	320	180	90	100	110	330	150	170
	BALLROOM SALON B	300	22 x 13.2	6	320	180	90	100	110	330	150	170
	BALLROOM SALON C	320	22 x 14.6	6	320	180	90	100	110	330	150	170
	BALLROOM SALON A+B	608	22 x 27.6	6	640	360	180	200	220	660	300	340
	BALLROOM SALON B+C	620	22 x 27	6	640	360	180	200	220	660	300	340
	GRAND BALLROOM + FOYER	1513	-	-	-	-	-	-	-	1400	650	680
	FOYER	585	-	-	-	-	-	-	-	200	-	-
1	BELLEVUE HOSPITALITY SUITE	266	18.4 x 13.4	3	-	-	-	-	-	180	100	120
	BELLEVUE MEETING ROOM 1	134	7.7 x 16.7	3	70	50	24	28	40	60	50	60
	BELLEVUE MEETING ROOM 2	132	10.7 x 13.4	3	70	50	24	28	40	60	50	60
	MONUMENTAL BOARDROOM 1	45	7.5 x 5.4	3	30	14	14	16	-	-	-	-
	MONUMENTAL MEETING ROOM 2	43	6 x 5.3	3	26	14	12	14	-	-	-	-
	MONUMENTAL MEETING ROOM 3	42	7.5 x 5.4	3	30	14	14	16	-	-	-	-
	MONUMENTAL MEETING ROOM 4	47	7.5 x 5.4	3	30	14	14	16	-	-	-	-
	MONUMENTAL MEETING ROOM 5	66	11.8 x 5.3	3	60	32	18	28	-	-	-	-
16	BOARDROOM- JACARANDÁ	100	16.5 x 5	3	-	-	-	24	-	-	-	24

Floor	Meeting Rooms sq. ft	Area sq. ft	Dimensions (ft)	Height	Theatre	Classroom	U Shape	Boardroom	Cabaret	Cocktail	Buffet	Menu
0	GRAND BALLROOM	9 989	72.17 x 137.13	18	1400	540	280	300	360	1200	500	600
	BALLROOM SALON A	3 315	72.17 x 45.93	18	320	180	90	100	110	330	150	170
	BALLROOM SALON B	3 229	72.17 x 43.30	18	320	180	90	100	110	330	150	170
	BALLROOM SALON C	3 444	72.17 x 47.90	18	320	180	90	100	110	330	150	170
	BALLROOM SALON A+B	6 544	72.17 x 90.55	18	640	360	180	200	220	660	300	340
	BALLROOM SALON B+C	6 674	72.17 x 88.58	18	640	360	180	200	220	660	300	340
	GRAND BALLROOM + FOYER	16 286	-	-	-	-	-	-	-	1400	650	680
	FOYER	6 297	-	-	-	-	-	-	-	200	-	-
1	BELLEVUE HOSPITALITY SUITE	2 863	60.36 x 43.96	9	-	-	-	-	-	180	100	120
	BELLEVUE MEETING ROOM 1	1 442	25.26 x 57.79	9	70	50	24	28	40	60	50	60
	BELLEVUE MEETING ROOM 2	1 421	35.10 x 43.96	9	70	50	24	28	40	60	50	60
	MONUMENTAL BOARDROOM 1	484	24.60 x 17.71	9	30	14	14	16	-	-	-	-
	MONUMENTAL MEETING ROOM 2	462	19.68 x 17.38	9	26	14	12	14	-	-	-	-
	MONUMENTAL MEETING ROOM 3	452	24.60 x 17.71	9	30	14	14	16	-	-	-	-
	MONUMENTAL MEETING ROOM 4	506	24.60 x 17.71	9	30	14	14	16	-	-	-	-
	MONUMENTAL MEETING ROOM 5	710	38.71 x 17.38	9	60	32	18	28	-	-	-	-
16	BOARDROOM- JACARANDÁ	1 076	54.13 x 16.40	9	-	-	-	24	-	-	-	24

The garden island of the Atlantic



Savoy Palace - Airport - **20 min.**
Savoy Palace - Lisbon - **1h20min.**

savoysignature.com/savoypalacehotel
Av. do Infante, nº 25 - 9004-542 Funchal
Madeira Island - Portugal